

1

$5041 - 100 =$

1 mark

2

$74 \times 2 =$

1 mark

3

= $372 - 8$

1 mark

4

$44 \div 4 =$

1 mark

5

$730 \div 1 =$

1 mark

6

$8 \times 5 \times 6 =$

1 mark

7

$76\,985 + 5236 =$

1 mark

8

$9 \times 25 =$

1 mark

9

$40 \times 40 =$

1 mark

10

$865 - 70 =$

1 mark

11

= 866×100

1 mark

12

$546 \times 4 =$

1 mark

13

$73 \times 9 =$

1 mark

14

$7.65 - 6.54 =$

1 mark

15

$9.46 + 13.777 =$

1 mark

16

$77\ 000 - 707 =$

1 mark

17

$5474 \div 7 =$

1 mark

18

$\frac{2}{7} + \frac{4}{7} =$

1 mark

19

$55 - 5.72 =$

1 mark

20

$569\ 898 - 70\ 919 =$

1 mark

21

$1.5 \div 1000 =$

1 mark

22

$2^3 + 2 =$

1 mark

23

$2310 \div 11 =$

1 mark

24

$12 \times 7.4 =$

1 mark

25

$$\begin{array}{r} 664 \\ \times 34 \\ \hline \end{array}$$

Show your working

2 marks

26

$20\% \text{ of } 2400 =$

1 mark

27

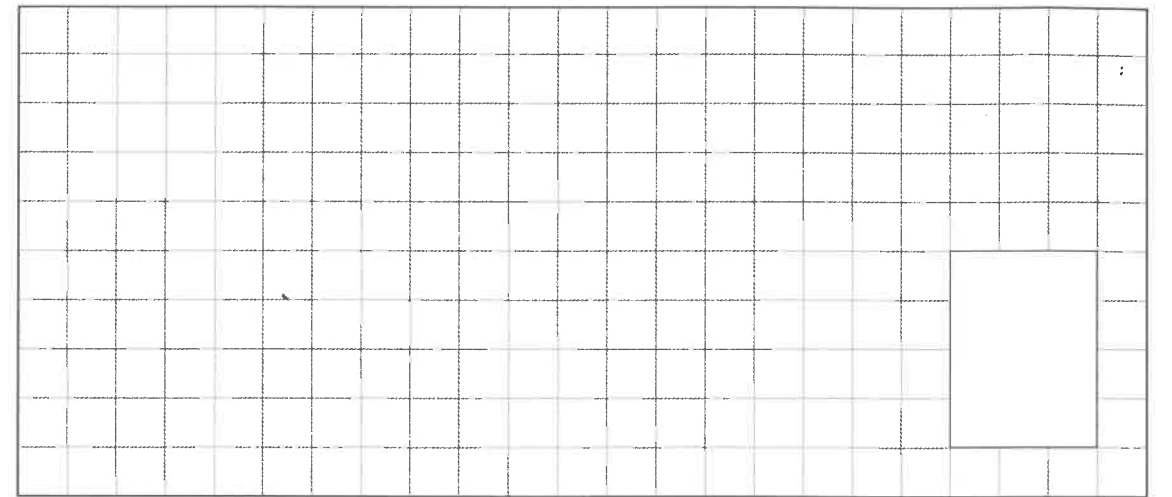
$$39 \overline{) 975}$$

Show your working

2 marks

34

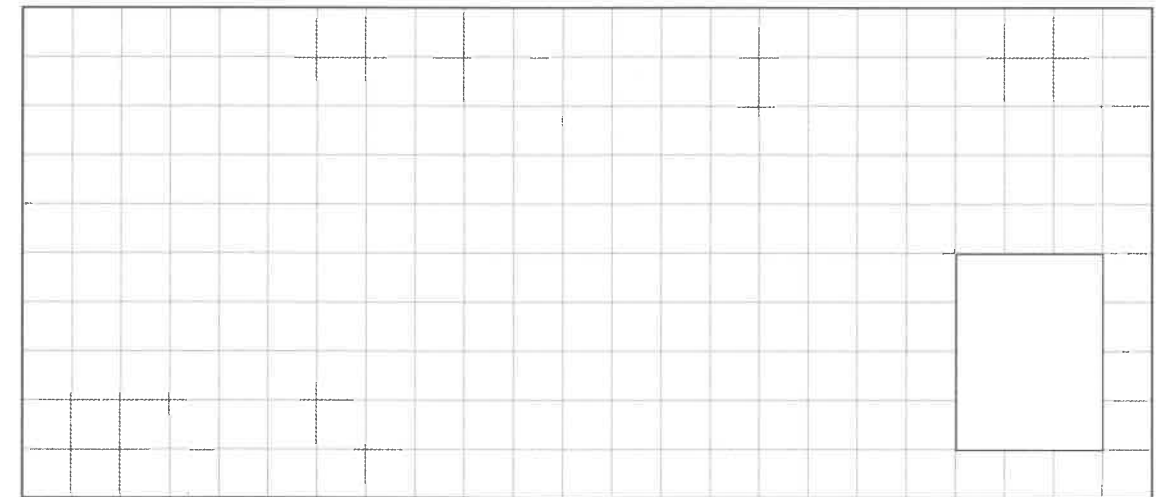
$$\frac{7}{10} \div 9 =$$



1 mark

35

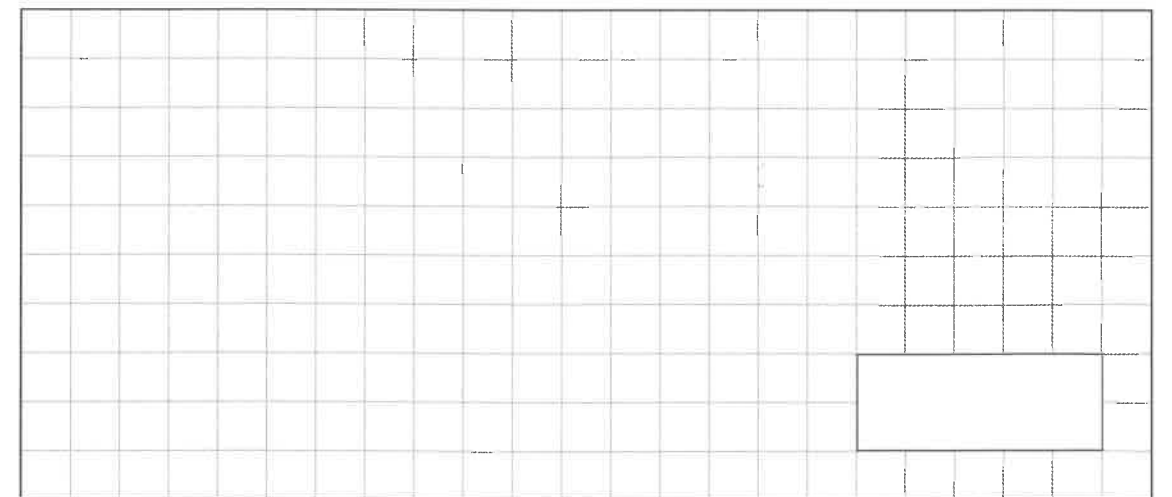
$$\frac{1}{4} + \frac{4}{5} =$$



1 mark

36

$$44 + 72 \div 12 =$$



1 mark